

Series 9

High-performance media resistant solenoid valves

FEATURES

- 2-way and 3-way configurations
- Performs at high speed (opening response time ≤ 5 ms)
- Leak-tight to 1×10^{-7} cm³/s/atm Helium
- Configurable up to 1250 psi
- Offers repeatability and consistency
- Constructed of non-corrosive stainless steel
- Available with a variety of ports, seals and voltages



MEDIA COMPATIBILITY

Liquids and gases

WETTED MATERIALS

Materials contacting media:

PTFE, stainless steel, body, seals

Body:

316L stainless steel

Seals:

FKM & Vespel, FKM

ELECTRICAL

Power 12 W

Voltage 12, 24 V_{DC}

Current/Resistance ($\Omega \pm 5\%$ @ 21 °C)

12 V _{DC}	1000 mA/12 Ω
24 V _{DC}	500 mA/48 Ω

PHYSICAL PROPERTIES

Operating environment 4 to 105 °C

Weight (e.g. 3-way, 1/8" NPT body) 88 g

Porting 1/4"-28 threaded ports;
1/8" NPT (female);
A-Lok compression fittings

Internal volume various

Series 9

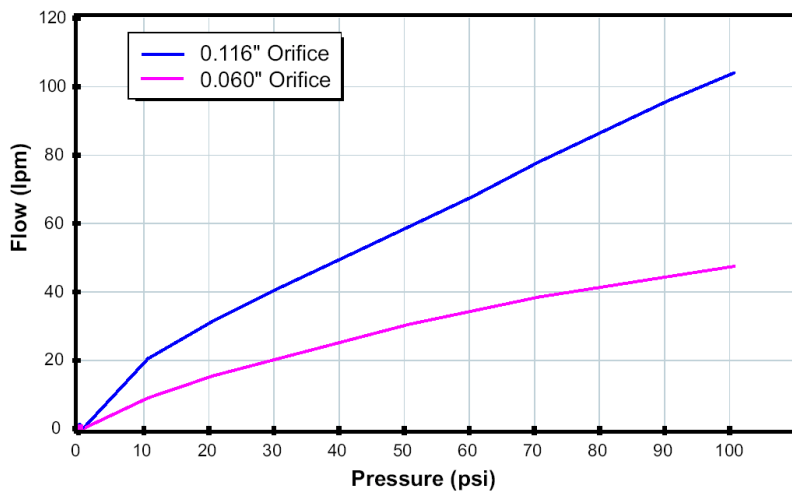
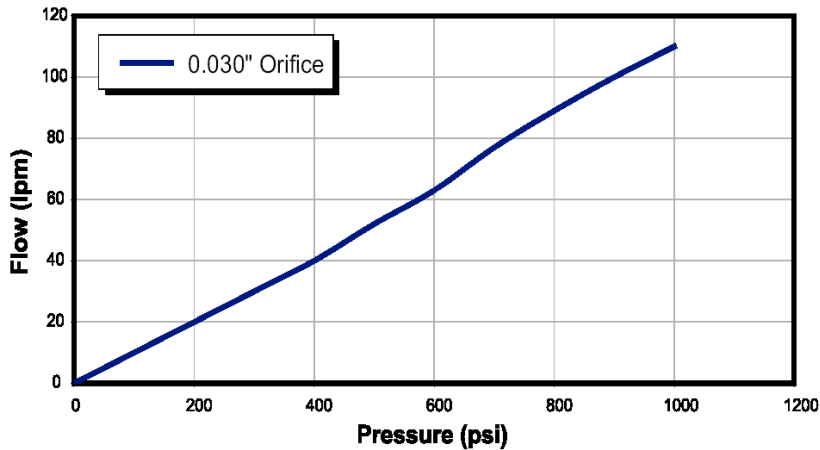
High-performance media resistant solenoid valves

PERFORMANCE CHARACTERISTICS

Part no.	Pressure	Orifice sizes	Leak rate*
See Ordering Information	Vacuum...86 bar (1250 psi)	0.030" (0.76 mm)	1 x 10 ⁻⁷ cm ³ /s/atm Helium
	Vacuum...17 bar (250 psi)	0.060" (1.52 mm)	
	Vacuum...7 bar (100 psi)	0.116" (2.99 mm)	

* Not rated for continuous duty at maximum temperature.

FLOW CURVES (typical air flow)

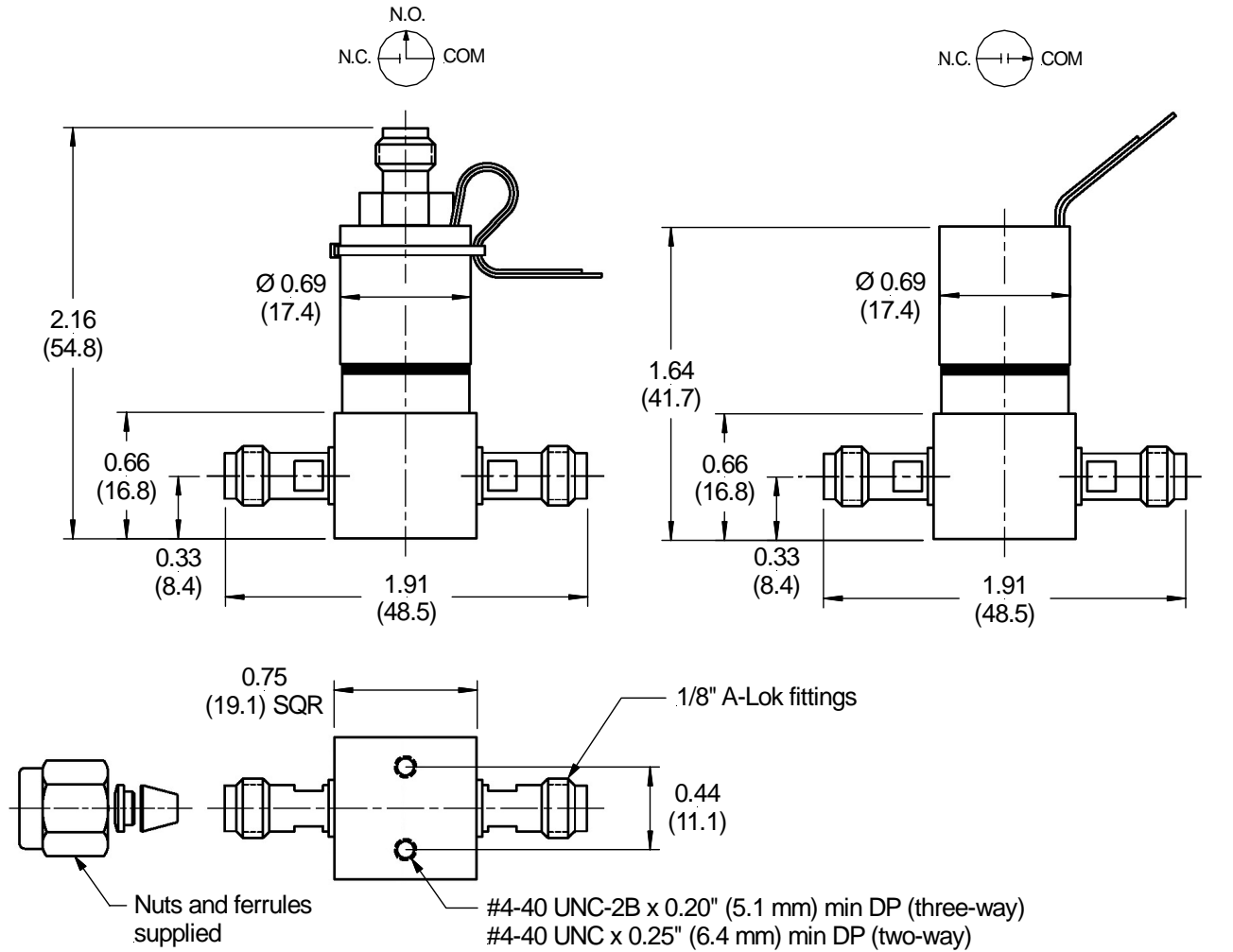


Series 9

High-performance media resistant solenoid valves

OUTLINE DRAWING

Part No. 009-0269-900 (3-way),
009-0270-900 (2-way NC)



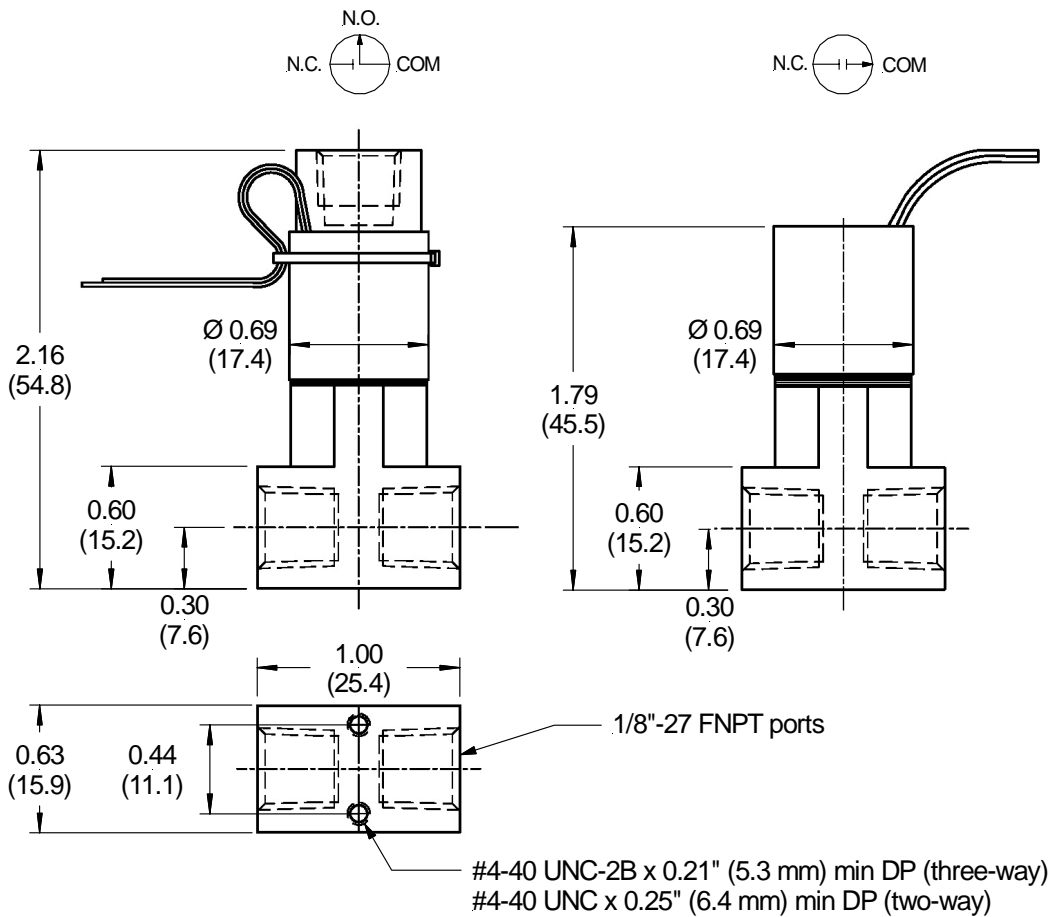
dimensions in inches (mm)

Series 9

High-performance media resistant solenoid valves

OUTLINE DRAWING (cont.)

Part No. 009-0933-900 (3-way),
009-0089-900 (2-way NC)



dimensions in inches (mm)

Series 9

High-performance media resistant solenoid valves

ORDERING INFORMATION

Part No.	Type	Operating Pressure	Orifice	Voltage	Porting	Seals
009-0100-900	2-way NC	Vac...86 bar (1250 psi)	0.76 mm (0.030")	12 V _{DC}	1/16" A-Lok	Vespel & FKM
009-0172-900						
009-0272-900				1/4"-28		
009-0270-900	3-way	Vac...17 bar (250 psi)	1.52 mm (0.060")	24 V _{DC}	1/8" A-Lok	FKM
009-0631-900					1/8" FNPT	
009-0269-900					1/8" A-Lok	
091-0094-900	2-way NC	Vac...7 bar (100 psi)	2.99 mm (0.116")	12 V _{DC}	1/8" FNPT	
009-0933-900						
009-0089-900				24 V _{DC}		
009-0143-900	3-way					
009-0207-900			12 V _{DC}			

Sensortechincs reserves the right to make changes to any products herein. Sensortechincs does not assume any liability arising out of the application or use of any product or circuit described herein, neither does it convey any license under its patent rights nor the rights of others.