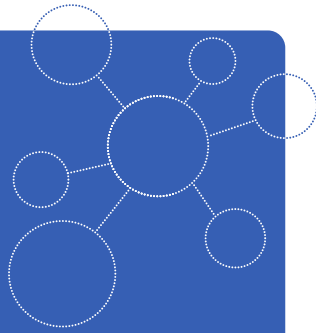


MADE IN GERMANY

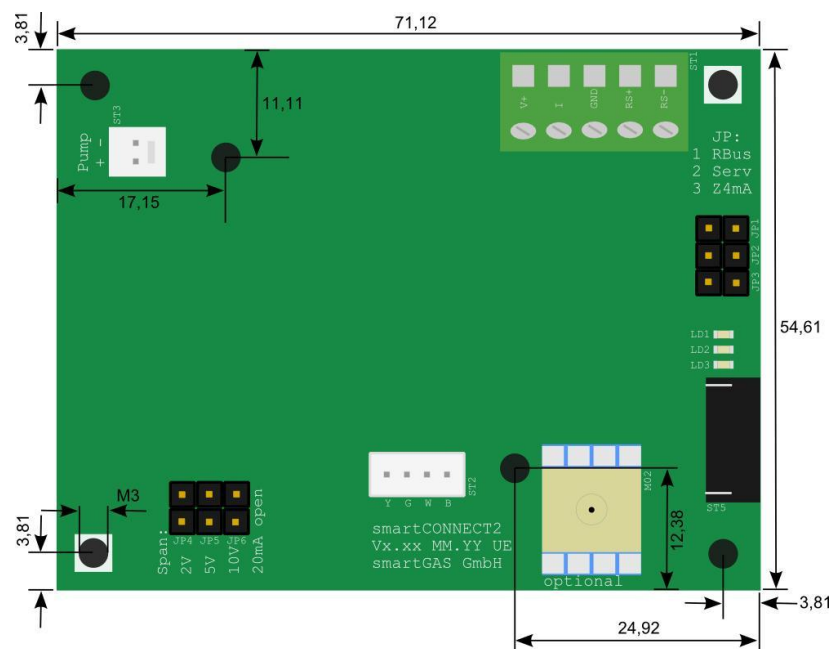


## CONNECT INTERFACE

Item-No.: Z6-000004



- Integrated ambient pressure compensation
- Optional internal pressure compensation (please request)
- Zero and Span calibration per jumper or software
- On board supply (6V DC) for peripheral equipment e.g. micro pump
- Operating status with 3 LED
- Long lifetime



### Application examples

Emission monitoring CEMS  
Biogas  
Process control  
Fruit ripening  
High voltage

### Customizing options

High performance corrosion resistant sample gas pump  
Easy to maintain robust fine dust filter  
Corrosion resistant flowmeter with precise needle valve  
Reliable condensate monitoring  
Acid dosing pump

## General features

Dimensions:	72 x 55 x 20 mm (L x W x H)
Weight:	25 g

## Electrical inputs and outputs

Supply voltage:	12-28 V (DC)
Analogue output signal:	0(4)-20mA (DC), max. 500 Ohm; (optional Namur NE 43 compatible); 0-2V / 0-5V / 0-10V (DC)
Digital output signal:	Modbus ASCII / RTU via RS 485, autobaud, autoframe
Calibration:	per jumper or software
Electric connector:	screw clamp (max. cable $\varnothing$ = 1.5 mm <sup>2</sup> )

## Climatic conditions

Operating temperature:	-20 .. +50 °C
Storage temperature:	-20 .. + 60 °C
Air pressure:	800 .. 1150 hPa
Ambient humidity:	0 .. 95 % relative humidity (not condensing)

All rights reserved. Any logos and/or product names are trademarks of smartGAS. The reproduction, transfer, distribution or storage of information contained in this brochure in any form without the prior written consent of smartGAS is strictly prohibited. All specifications – technical included – are subject to change without notice. Depending on the application, the target gas and the measurement range the technical data may differ. No liability is accepted for any consequential losses, injury or damage resulting from the use of this document or from any omissions or errors herein. The data is given for guidance only. It does not constitute a specification or an offer for sale.

For more information, please visit [www.smartgas.eu](http://www.smartgas.eu) or contact us at [sales@smartgas.eu](mailto:sales@smartgas.eu)

Please consult smartGAS sales for parts specified with other temperature and measurement ranges. At first initiation and depending on application and ambient conditions recalibration is recommended. Recurring cycles of recalibration are recommended.